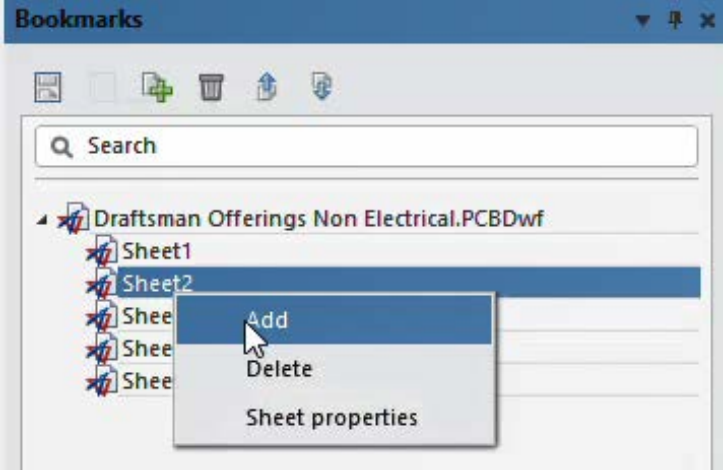
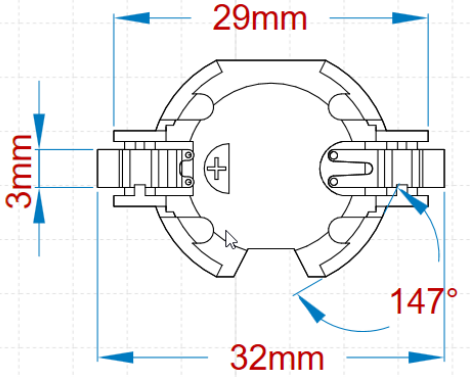
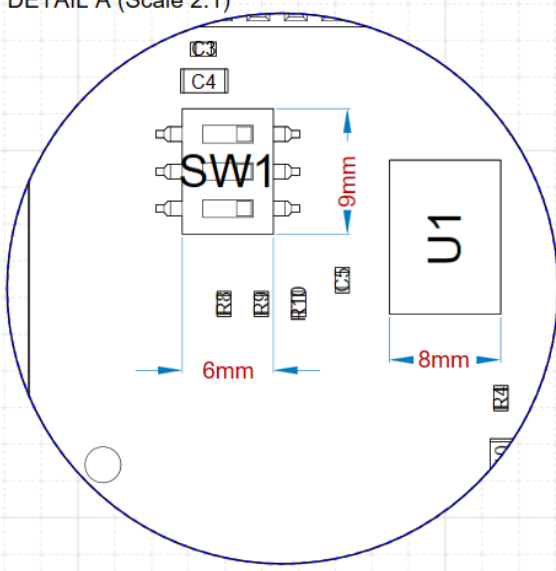
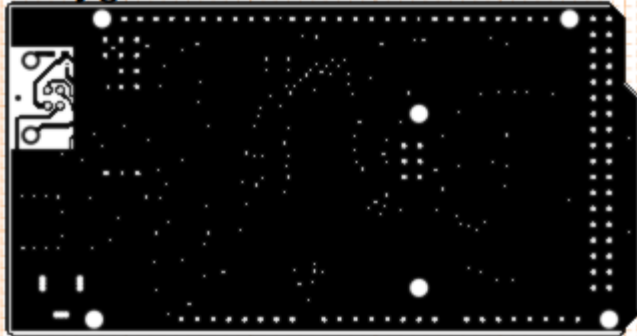


## Altium Draftsman Webinar Q & A based on AD18.1.6

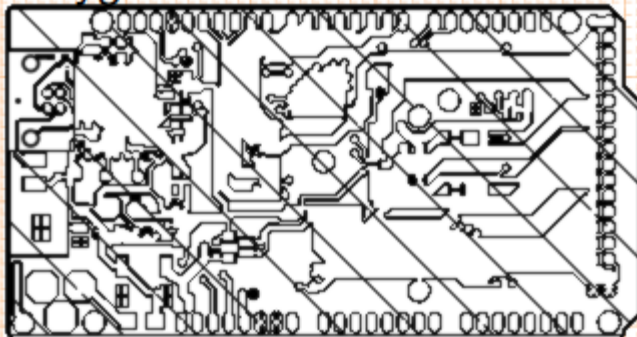
Question / Comment	Answer / Response
<p>Is there a way to add a new Draftsman page between existing pages? Or only at the end? Same goes for deleting a page.</p>	<p>In the webinar, we had claimed that there was not a way to add a sheet in between existing sheets; however, it was later discovered that Altium had added the bookmark panel in one of the updates to AD18 which allowed for the addition of sheets, where desired:</p> 
<p>Is there a way to have consistent drill symbols between the PCB doc and the Draftsman doc?</p>	<p>Altium is assigning a different set of drill symbols for Draftsman and the .PcbDoc. This has been noted in Bug #9287.</p>
<p>Can you add dimensions to the component view?</p>	<p>Yes:</p> 

<p>Can I add dimensions to the detailed magnified callout view?</p>	<p>Yes:</p> <p>DETAIL A (Scale 2:1)</p> 
<p>Is there a way to have consistent drill symbols between the PCB doc and the Draftsman doc?</p>	<p>Altium is assigning a different set of drill symbols for Draftsman and the .PcbDoc. This has been noted in Bug #9287.</p>
<p>On the board view of either assembly or fab, can you turn off a copper pour?</p>	<p>For the Assembly View, Draftsman only renders the outlines of the board and of the components.</p> <p>In the Fabrication View, you have some options, though you cannot completely turn off the polygon pour. The three options are Fill, Hatched, and Outline:</p>

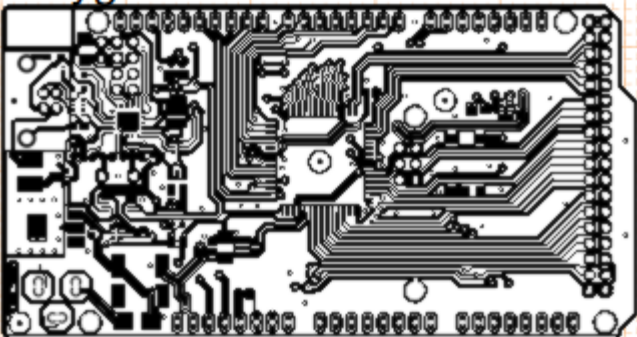
### Polygon Fill



### Polygon Htch



### Polygon Outline



<p>Are there any drawbacks to using Draftsman in AD17 vs AD18?</p>	<p>Draftsman was introduced in AD17. 'Deficiencies' are not uncommon when a feature of this extent is introduced. Altium has been addressing reported issues, making AD17 Draftsman usable. If something is amiss with a feature, you can compensate for it by adding information manually through a screen shot, or through a table.</p>
<p>Does updating the layerstack manager in the .pcbdoc automatically update the info already placed using Draftsman?</p> <p>Do Draftsman documents (layer views, board views, drill tables, etc.) update automatically if I go back and change the PCB layout?</p>	<p>PCB related features placed in the Draftsman editor can be updated if there are changes in the .pcbdoc; however, this is NOT performed dynamically. This must be updated using Tools » Update Board in the Draftsman menu.</p> <p>The only information that does NOT get updated are the tables or the text box. Any primitive that was derived from the .pcbdoc will be updated.</p>
<p>Will the assembly view with the "transparent" outlines work well when a shield obscures the components under it, as in the first view you showed of the assembly view?</p>	<p>If a large component is blocking the view of other components in the Board Assembly View, there is a feature within the properties that allows components to be hidden. In this case, the user can place 2 copies, one with the component in view and the other hidden.</p>
<p>You showed that you have to select to "update the board". Does that operation automatically get implemented upon doing a release?</p>	<p>If the draftsman document is being generating from the Outjobs with a template to guide its creation, the answer is 'yes'. However, it is recommended that the Draftsman document be opened for human review because there is a very good chance that something will need to be moved or rescaled.</p>
<p>How do you recommend add fill and planarize to vias? I notice you can't add custom columns in the drill chart.</p>	<p>Though you can add a column in the drill table in the .pcbdoc and provide whatever information you want, this will not propagate to the Draftsman tool. This is a known issue listed under #8816 in Bug Crunch.</p> <p>Until they remedy this issue, it is recommended that the generic table be placed adjacent to the drill table. It might take a bit of finesse to get the drill and generic tables to align, but it will allow you to provide additional information.</p>